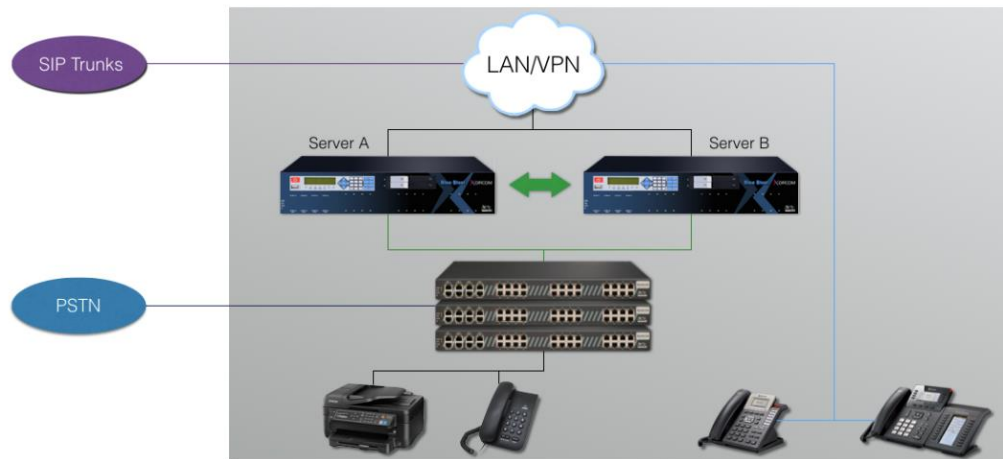


TwinStar 4000 High Availability Enterprise-Grade CompletePBX Telephony System Data Sheet



The TwinStar Plus CXTS4000 configuration is comprised of two servers, based on the Xorcom CXT4000 series IP-PBX, that serve in failover configuration. Both servers are connected via Ethernet (and optionally, via USB 2.0 to an Astribank).

TwinStar Plus provides full redundancy for a complete PBX system, including telephony interfaces (if required). It can also be used in a pure SIP environment. An automatic replication and detection mechanism detects server failure and switches all telephony to the backup server, keeping downtime to an absolute minimum.

The CXT4000 server features an Intel Xeon Processor E3-1225V2 8M cache (3.20GHz), hot swappable disk drives, and two built-in redundant power supplies supporting up to four Astribank units.

PSTN/analog phone ports can be provided by connecting external Astribank units via the USB ports to support up to 960 PSTN/analog phones ports, up to 24 E1 R2 / T1 PRI ports, up to 1500 users and up to 880 concurrent calls.

Features

- Unlimited voicemail boxes, hunt groups, call center groups, and auto attendants (IVRs)
- Basic built-in call center with call recording, barge and whisper
- Hot-desking
- Sophisticated Classes of Service for enhanced security
- Emergency notification module
- Endpoint manager
- User-friendly Web interface
- Interface in different languages
- CDR (Call Details Record)
- TDM/SIP/IAX trunks
- Remote extensions
- Voicemail
- Voicemail to email
- Web access to voicemail
- Fax support
- Fax to email
- IVR menu system
- Ring groups
- Call queues
- Conference rooms

- Follow me
- Time-based routing
- Advanced dialing rules
- Music-on-hold
- Paging and intercom
- Admin status screen
- Package manager (for easy updates)
- Network settings tool

Software

Management Interface	Xorcom CompletePBX 5 (64-bit)
Linux version	CentOS 7
Framework	Asterisk 13
Security	Intrusion protection software, firewall protection, password strength indicator, class-of-service, dialing rules, modern Linux tools
<u>TwinStar Plus™</u>	High availability management for CompletePBX systems


Hardware

Processor	Intel Xeon Processor E3-1225V2 8M cache (3.20GHz)
RAM	8GB (Upgradeable to 32 GB)
Hard disk	Two hot-swappable 1TB 2.5" (Upgradeable to SSD)
IPMI	Intelligent Platform Management Interface (IPMI) v.2
<u>RAID1</u>	Dual hard drive for increased system reliability
Fan	3 redundant fans
<u>Echo Cancellation Module</u>	Voice enhancement & echo cancellation (optional)
USB	2 external USB 2.0
<u>I/O Ports</u>	Input/Output ports for Asterisk peripheral device support (optional and model-specific)
<u>Rapid PA™</u>	Public Address capability for FXS port(s) - (optional and model-specific)

Telephony

Maximum number of concurrent calls	880 (SIP only); 750 (PRI + FXS)
---	---------------------------------

Power

Power supply	Two internal, redundant, hot-swappable units
Voltage	Switching, auto adjust 100/240 Volts, 50/60 Hz
Power consumption	230 Watts (maximum)
Built in grounding connection	

Network

Ethernet port - standard	10/100/1000 Mb/s (x2)
--------------------------	-----------------------

Maintenance and Support

- LCD (Liquid Crystal Display) touch panel, supporting:
 - ◆ Status of active systems, including:
 - All configured IP addresses
 - TwinStar™ (dual-server redundancy)
 - Redundant Power Supply (when configured)
 - Blink ports (extensions, channels, XPD and SPAN)
 - Active calls
 - ◆ Maintenance issues, including:
 - Asterisk restart
 - DAHDI restart
 - Server reboot
 - Server power off
 - ◆ Settings, including:
 - Enable/disable DHCP
 - Manual IP configuration
- Monitor and keyboard support
- Internal backup & restore utility
- External [Rapid Recovery™](#) backup utility (provided on disk-on-key)
- [Rapid Tunneling™](#) utility providing secure remote access for product support purposes
- Internet updates

Environment

Storage temperature	-20° to 70° Celsius (-4° -158° F)
Working temperature	0° to 40° Celsius (32° -104° F)
Humidity	20%-95%, non-condensing

Dimensions and Weight

Weight	7 Kg 15.4 lbs May vary dependinmg on configuration
Size	19" 2U industry standard rack-mountable chassis
Dimensions	44 x 44 x 9 cm (17.3 x 17.3 x 3.5")

Specifications may change without prior notice.